

Our Mission

To inspire, engage, and educate about the ecological importance of native pollinator species and the diverse native plant communities essential for their survival – and ours. We are committed to the creation and restoration of pesticide-free **pollinator corridors** throughout the Rogue Valley.



Pollinators need lots of **habitat** - trees, shrubs, and flowering plants that bloom all year long, providing food, habitat and nesting sites for bees, butterflies, moths, and beetles.



Lots of small gardens in close proximity make one large garden!



Invite your neighbors to join you in creating a **Buzzway** corridor!



Click Resources on our website to learn more about native pollinators, native plants, local organizations and more!

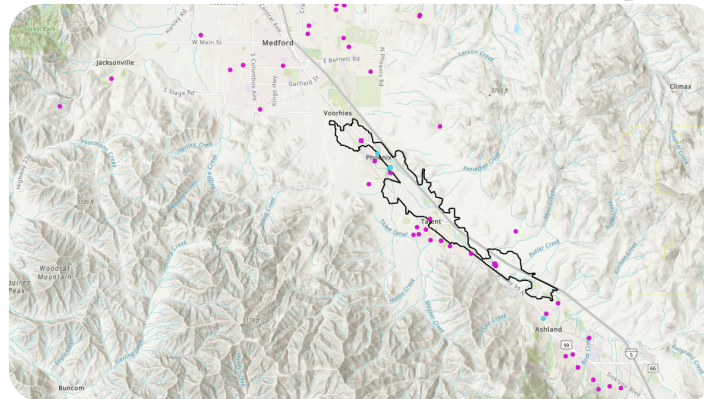


The Buzzway is about creating connectivity – connecting gardens to gardens for pollinators and connecting neighbors to neighbors for community.

Fun Facts

- **85%** of the world's flowering plants depend on pollination by insects or animals to reproduce.
- **1 out of 3 bites of food** we eat come from pollinated crops.
- **70%** of bees nest in the ground.
- **3,600 species of plants** - trees, shrubs, grasses, flowering plants, and bulbs - and **700 species of bees** are **native** to **Oregon**.

An ongoing internship project with **SO Southern OREGON UNIVERSITY**



Map by Tallulah Fattorusso 2023

Private Residence (pink dot) Public (blue dot)

Almeda Fire Perimeter (black line)

Properties within Fire Zone: Private Residence (pink square) Public (blue square)

We can **rebuild** pollinator habitat after the 2020 Almeda Fire. We can **offset** land lost to agriculture and development. We can **bring back** the pollinators in spite of steep declines in insect species worldwide. **Your pollinator garden is the answer!**

Create Pollinator Corridors!



Gardens, parks, and other natural landscapes in close proximity provide pollinators of all stripes with areas much larger than one backyard. This provides species diversity for food selection, nesting and overwintering areas, and reproduction.

Bee part of the Buzzway!

- Add your pollinator landscape to the map!
- Invite your friends and neighbors to create a pollinator garden!
- Learn about the ecosystems native to this region!
- Help with community outreach projects!
- Schedule a presentation for your organization, school, or business!
- Donate!
- Sign up for our e-Newsletter, *The Pollinator Times*!
- Volunteer!



Help us put more pollinator landscapes on our Rogue Buzzway map! Visit our website to submit your information. – and get on the map!



A Pollinator-Friendly Landscape Provides:

1. Forage

(Native) plants that provide flowers from early spring to early winter, and serve as "hosts" (food) for caterpillars of moths and butterflies.



2. Moisture

A spring, seep, stream, or shallow pebble-lined dish, bird bath, or water feature to provide water, minerals, and/or mud.

3. Habitat

Untended or natural areas with dead wood, bare soil, shrubs, grasses, and trees that provide undisturbed nesting and overwintering areas for bees, butterflies, moths, other pollinators, and beneficial insects.

4. Pesticide-Free Space

Insecticides like neonicotinoids are toxic to insects, people, and birds! Herbicides harm pollinators, too!

Plant a native plant today!

For over 120 million years, native pollinators in Southern Oregon co-evolved with our native trees, shrubs, and flowers.

Bee part of the Buzz! Bee a Sponsor! Bee a Pollinator Protector!

Visit our website and click '**Buzzway**' to submit *your* pollinator habitat - and get on the map!

An ongoing internship project with **Southern OREGON UNIVERSITY**

The Rogue Buzzway:

- **Locates** pollinator landscapes and gardens.
- **Identifies** areas that lack pollinator plantings.
- **Educates** and **inspires** the community to expand the quantity, quality, and variety of pollinator habitats.
- **Improves** local food production by supporting and increasing pollinator populations.



Pollinator Project Rogue Valley

312 N. Main, Suite B
Phoenix, OR 97535
458-214-0508

pollinator@PollinatorProjectRogueValley.org
www.PollinatorProjectRogueValley.org
a 501c3 nonprofit

cover art thanks to Judith Karen Monson Grillo

Rogue Buzzway



Pollinator Project Rogue Valley



Pollinators are as important as sunlight, rain, and soil fertility for the health of both human lives and natural ecosystems